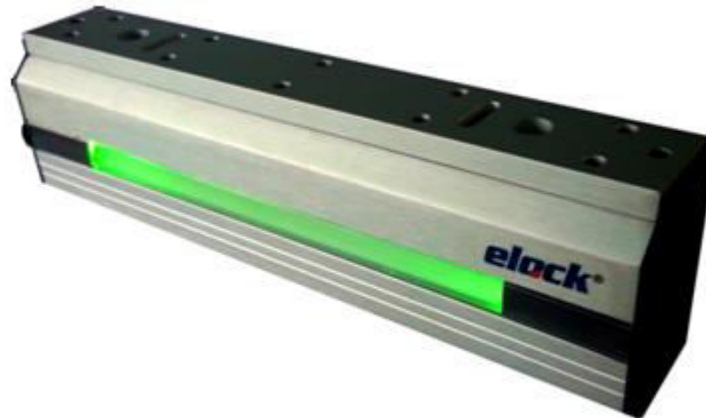


## Next Generation EM LOCK



### Features :

ELOCK Smart Series is next generation EM lock. A long visible Bi-Color (Red & green) LED bar indicates the door locking status open or closed. The lock Build in relocking timer to re-lock again after preset time delay. The timer can be set from 5 ~ 30 seconds.

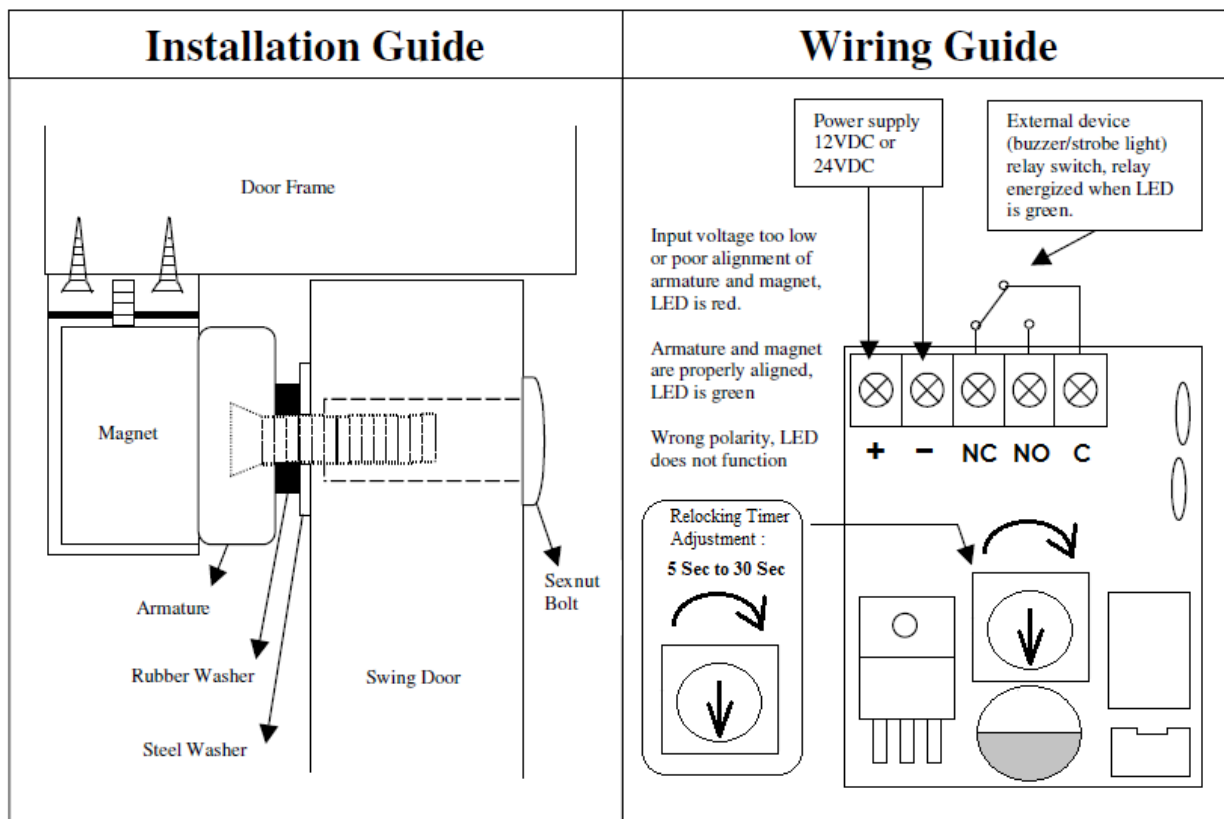
### Specifications :

- ✓ Holding Force : 1200lbs
- ✓ Dual Voltage 12 & 24VDC (Auto Switchable)
- ✓ Current Drawn : 500mA (12VDC) / 250mA (24VDC)
- ✓ MOV Surge Current Protection
- ✓ Fail Safe Type
- ✓ Push-off Button On Armature For Instant Release
- ✓ "L" Bracket and "Z" Brackets Available for Easy Mounting
- ✓ Dimension :-

Magnet : 265(L) x 66(W) x 40(D) mm

Armature Plate : 185(L) x 60(W) x 17(D) mm

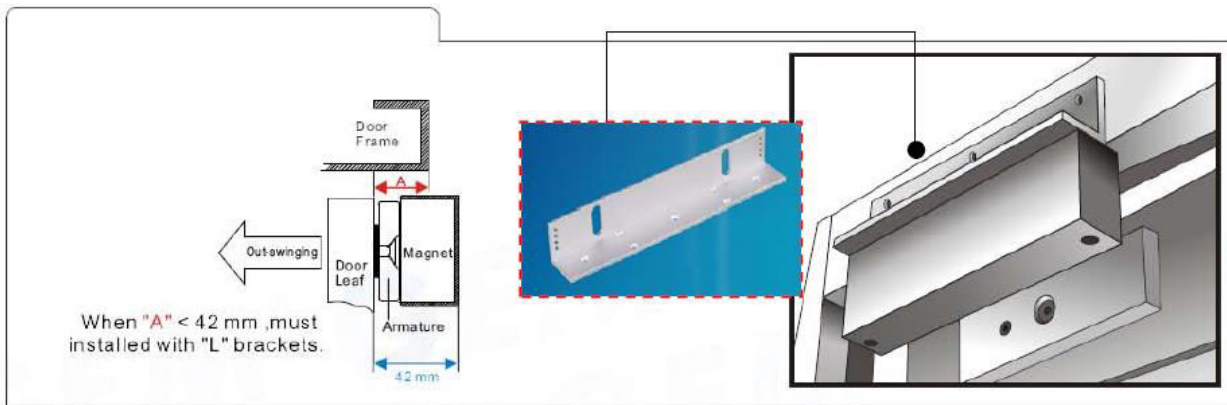
## User Guide :



## Optional Brackets :

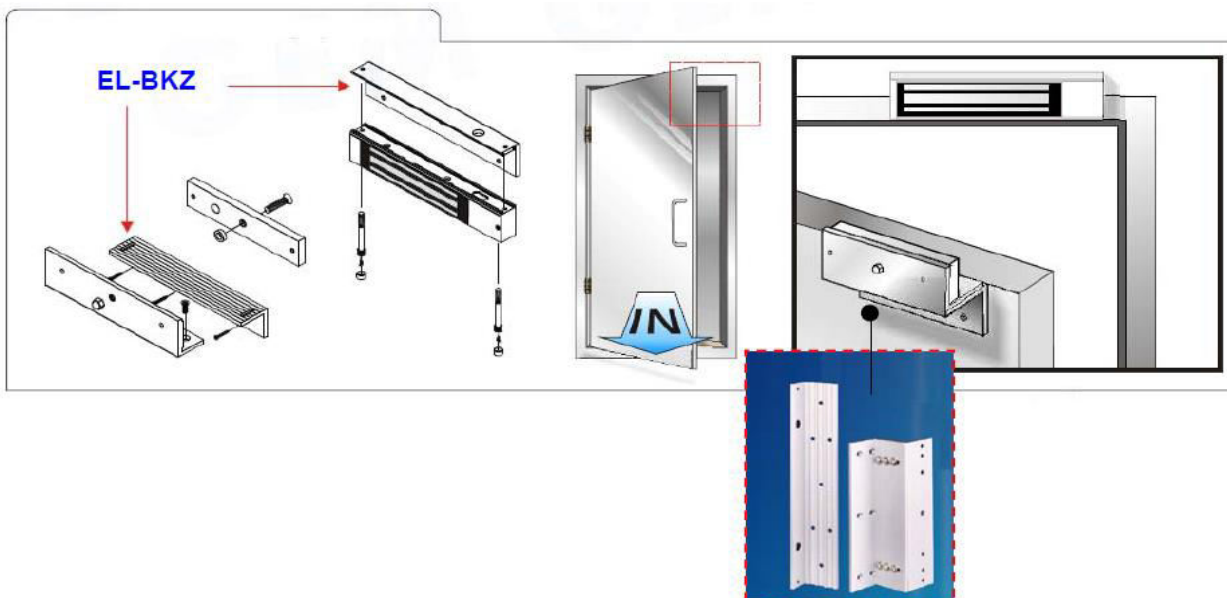
### EL-BKL ( L Bracket )

- Adjustable "L" bracket for outward door when the header is narrow.
- Available for eLock-300, 600 & 1200 series.

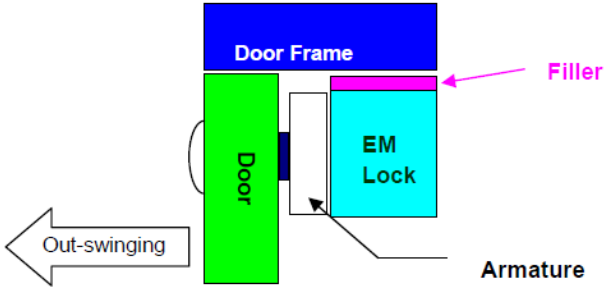
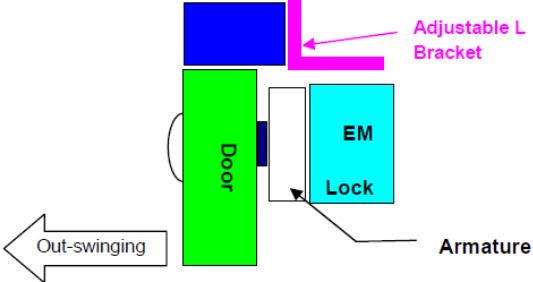


### EL-BKZ ( ZL Bracket )

- Adjustable "ZL" bracket for inward door application.
- Available for eLock-300, 600 & 1200 series.



## Mounting Diagram :

<p><b>Standard Mounting :</b></p> <ul style="list-style-type: none"> <li>- With filler plate mounted on top of EM lock.</li> </ul>	
<p><b>L Bracket Mounting :</b></p> <ul style="list-style-type: none"> <li>- Mounting with " Adjustable L Bracket " when door frame is narrow.</li> <li>- Mounting Procedure :- Remove the original " Filler Plate " attached to EM Lock, replace with " Adjustable L Bracket " set.</li> </ul>	
<p><b>ZL Bracket Mounting :</b></p> <ul style="list-style-type: none"> <li>- Mounting with " ZL Bracket " for In-swing door application.</li> <li>- Mounting Procedure:- Remove the original " Filler Plate " attached to EM Lock, replaced with " Adjustable ZL Bracket " set.</li> </ul>	