

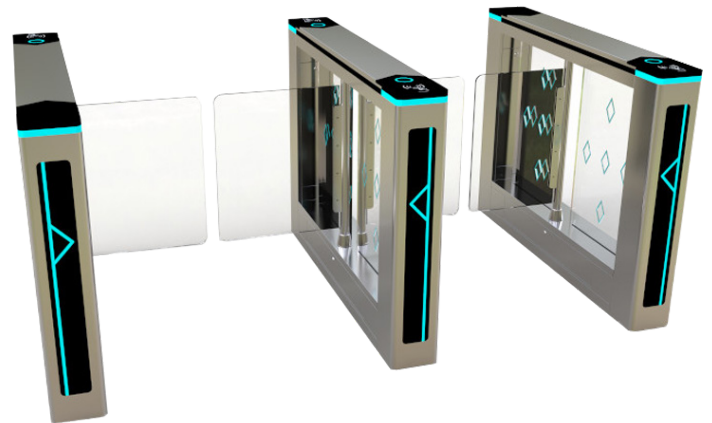
Wide Lane Barrier

Introduction

Swing barrier designed for wider lane access provides a comfortable access such as those who are carrying large bags, baby stroller, elderly and disabled access. The passage width are available at 600mm and 900mm suitable for wheelchair. JAVIN swing gate has proven to be a popular choice for those who are unwilling to compromise on security or comfortable access.

Functionality

- » Flexible lane configuration
- » Strong visual LED provide clear instruction
- » Easy to integrate most access control
- » Intuitive sensors detect tailgating
- » Smooth, swinging motion barrier
- » Slim, tapered cabinets with ergonomic design and small footprint



JS5050

TECHNICAL SPECIFICATIONS

General Specification

Operation	Automatic. Fail-safe (In the event of power outage, swing door automatic open)
Opening / Closing Speed	0.9 second
Direction	Single or bi-directional
Working Environment	Indoor or outdoor
LED Light	Entry or No-Entry display direction arrows
Passage Per Minute	20~35 persons
Opening / Closing Cycle	5,000,000
Working Temperature	Indoor/outdoor (use a canopy cover) -10°C—50°C, Relative humidity: ≤90%
Communication Interface	RS485

Physical

Dimensions	185(W) x 1400(D) x 980(H)mm
Housing Material	SUS304 stainless steel optional to use SUS316L
Input Interface	Dry contact signal or +12V signal or pulse

Electrical

Working voltage	AC230 ±10% 50/60HZ ±10%
Electronic motor	Brushless motor 24V 40W with fully auto model

Dimension

