

For Large Number of People

Introduction

Automatic stainless steel tripod arm and robust stainless steel housings, able to withstand improper use. Suitable for stadiums, loading bays, residential and public access. JAVIN tripod turnstile are suitable at sport stadiums, malls or public areas. It can operate under large number of people at single or bi-directional.

Functionality

- » Robust turnstiles
- » Easy integrate most access control
- » Build from high quality stainless steel
- » Automatic drop arm in case of power cut or emergency
- » Highly visible LED sign
- » Suitable for indoor and outdoor with shelter

TECHNICAL SPECIFICATIONS

General Specification

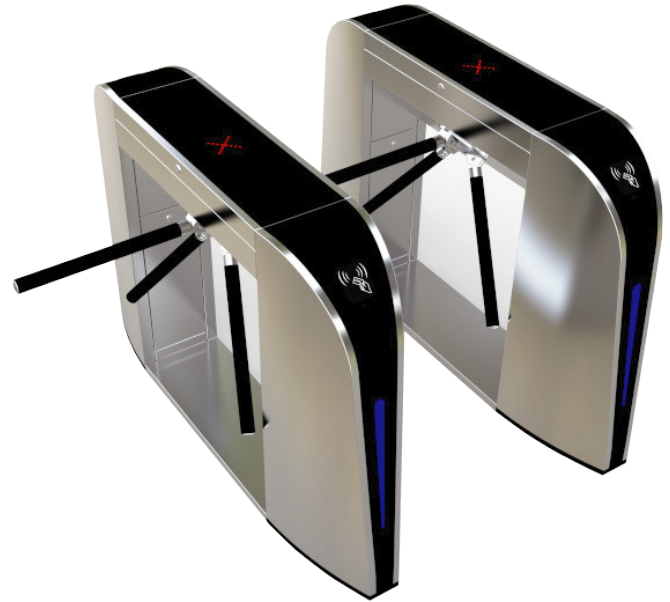
Operation	Automatic. Fail-safe (In the event of power outage, drop arm)
Opening / Closing Speed	0.9 second
Direction	Single or bi-directional
Working Environment	Indoor or outdoor
LED Light	Entry or No-Entry display direction arrows
Passage Per Minute	20~30 persons
Opening / Closing Cycle	5,000,000
Working Temperature	Indoor/outdoor (use a canopy cover) -10°C—50°C, Relative humidity: ≤90%
Communication Interface	RS485

Physical

Dimensions	280(W) x 1400(D) x 980(H)mm
Housing Material	SUS304 stainless steel optional to use SUS316L
Input Interface	Dry contact signal or +12V signal or pulse

Electrical

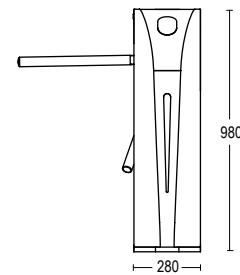
Working voltage	AC230 ±10% 50/60HZ ±10%
Electronic motor	Brushless motor 24V 40W with fully auto model



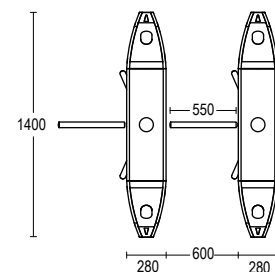
JT1200

Dimension

Front View



Top View



Side View

